

DESCRIPTION

Normally Closed (NC) - Solenoid Shuttle Valve

PRESENTATION

- Coaxial valve optimized to ensure high flow control
- The design allows the control of high pressure
- On request available Normally open version
- Universal mount position
- Optional EPDM sealing version for steam and hot water application



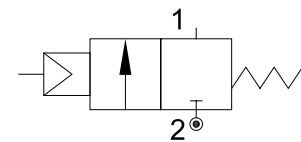
USE:

Ideal to control combined high flow and pressure, Packaging, PET blowing machines, Powder transport, Pneumatic lines, Hot water and fluid slightly aggressive

CONNECTION: Threaded (NPT, BSP)

VALVE FEATURES

Fluid Pressure	A to B: 40bar, B to A: 12bar
Body material	AISI 304
Seal	FPM
End cap	AISI 304
Fluid	Air, Gas, Oils, Water, etc.
Fluid viscosity	500 cst (mm ² /s)
Fluid temperature	-20°C to +130°C
Ambient temperature	-10°C to +80°C
Control Type	Normally closed
Tube & Internal parts	AISI 304/AISI 316
Coil insulation class	H
Electrical safety	IEC 335
IP protection class	IP65
Standard voltage	24V DC



OVERALL DIMENSIONS

CODE	G	DN	Max pressure bar	Ød	D	K	M	J	H	Kv	Electrical Features		Response time	
											Nominal voltage V	Nominal current A	ms	
CE100CGV10/821	3/8"	DN10	from A to B: 40bar	10	145	25	85	32	50	2.2	DC 24V	DC 1.2A	45	70
CE100EGV20/821	3/4"	DN20		20	193	35	111	46	80	7.5	DC 24V	DC 2A	105	150
CE100FGV25/821	1"	DN25	from B to A: 12bar	25	212	36	121	50	90	12.2	DC 24V	DC 2.2A	150	190

