

**DESCRIPTION**

Single Acting, Normally Closed (NC) - Inlet Under Seat

**PRESENTATION**

- Welded Socket Valve Acc. to DIN 11850-2
- Optional Socket Valve Acc. to DIN 11850-3
- Water Hammer effect prevention
- Protected visual position indicator
- PTFE sealing pack
- Maintenance free sealing pack
- Double acting version available on request
- Normally open version available on request
- Pilot thread: G1/8" (G1/4" for 125 mm actuators)
- Universal mounting position

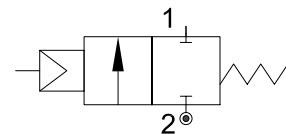


**USE:** Packaging, Drinks Filling Machinery, Textile printing & Dyeing, Gas industry, Pharmacy & Medical Equipment, Chemical industry, Disinfection, Foaming Equipment, Water/sewage Disposal

**CONNECTION:** Welded

**VALVE FEATURES**

Fluid Pressure	Up to max 16bar (232psi)
Control Pressure	3.5 - 6bar (see tables)
Control Fluid	Neutral gas, Air
Body material	Stainless steel AISI 316
Sealing	PTFE
Actuator Material	AISI 304 or Aluminium (125 mm)
Actuator Size	40mm, 50mm, 63mm, 90mm, 125mm
Fluids	Water, Alcohol, Oils, Fuels, Steam, Natural gases or Liquids, Organic solvents, Acids and Lyes
Fluid viscosity	Max 600cSt (mm <sup>2</sup> /s)
Fluid temperature	-10°C to +180°C
Ambient temperature	-10°C to +80°C
Control Type	Normally closed (on request Normally open, Double acting)



OVERALL DIMENSION

CODE	Actuator	ND mm	Pilot Pressure bar	Max Pressure bar	Q mm	C mm	R mm	K mm	Welded connection			
									HA mm	HL mm	DIN 11850-2	
											D mm	S mm
PS140DGW15/V	40	ND15	4	0 - 13	1/8"	50.5	27	112	118	70	19	1.5
PS150DGW15/V	50		4.5	0 - 14	1/8"	60	33	125	128			
PS150EGW20/V	50	ND20	4.5	0 - 14	1/8"	60	33	132	135	82	23	1.5
PS150FGW25/V	50	ND25	4.5	0 - 8	1/8"	60	33	136	150	100	29	1.5
PS163FGW25/V	63		5	0 - 13	1/8"	75	41	162	175			
PS190FGW25/V	90		3.5	0 - 14	1/8"	106	55	211	218			
PS163GGW32/V	63	ND32	5	0 - 6	1/8"	75	41	174	186	125	35	1.5
PS190GGW32/V	90		6	0 - 16	1/8"	106	55	223	232			
PS163HGW40/V	63	ND40	5	0 - 5	1/8"	75	41	175	190	130	41	1.5
PS190HGW40/V	90		6	0 - 16	1/8"	106	55	223	235			
PS163IGW50/V	63	ND50	5	0 - 3	1/8"	75	41	183	206	155	53	1.5
PS190IGW50/V	90		6	0 - 1	1/8"	106	55	232	250			
PS190MGW65/V	90	ND65	6	0 - 6	1/8"	106	55	265	325	270	70	2
PS1125MGW65/V	125AL		5.5	0 - 9	1/4"	170	85	315	365			
PS1125RGW80/V	125AL	ND80	5.5	0 - 5	1/4"	170	85	327	380	284	85	2

