

DESCRIPTION

Single Acting, Normally Closed (NC) - Inlet Under Seat

PRESENTATION

- Compact valve
- Water hammer effect prevention
- Protected visual position indicator
- PTFE sealing pack
- DN100 (G4") on request
- NPT thread on request
- Maintenance free sealing pack
- Normally open version available on request
- Double acting version available on request
- Pilot thread: G1/8" (G1/4" for 125 mm actuators)
- Universal mounting position



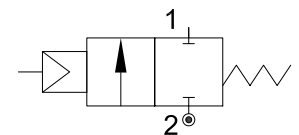
USE: Packaging, Drinks Filling Machinery, Textile printing & Dyeing, Gas industry, Pharmacy & Medical Equipment, Chemical industry, Disinfection, Foaming Equipment, Water/sewage Disposal

CONNECTION: Threaded (NPT, BSP)

5

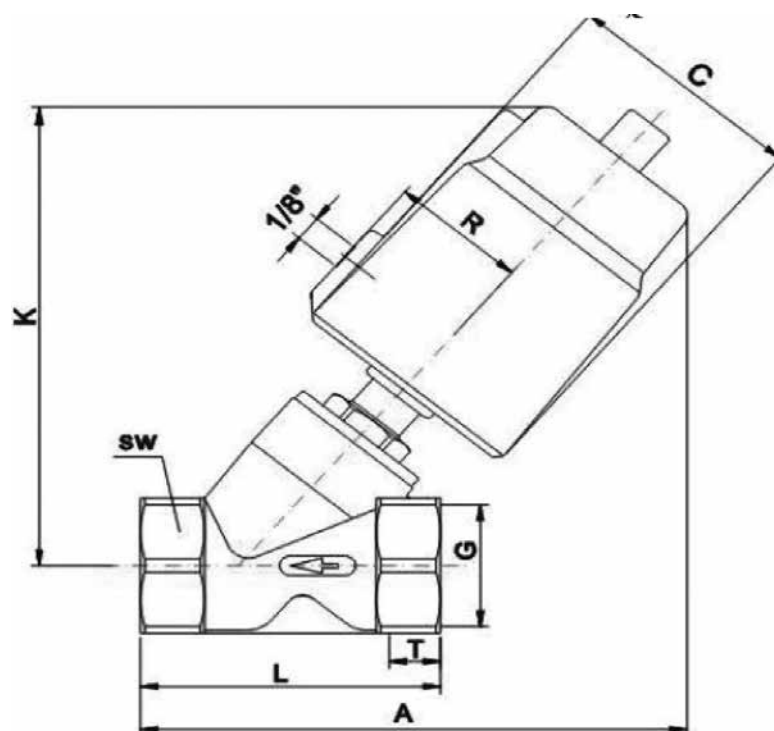
VALVE FEATURES

Fluid Pressure	Up to max 16bar (232psi)
Control Pressure	3.5 - 6 bar (see table)
Control Fluid	Neutral gas, Air
Body material	Stainless steel AISI 316
Sealing	PTFE
Actuator Material	AISI 304 or Aluminium (125 mm)
Actuator Size	40mm, 50mm, 63mm, 90mm, 125mm
Fluids	Water, Alcohol, Oils, Fuels, Steam, Natural gases or Liquids, Organic solvents, Acids and Lyes
Fluid viscosity	Max 600cSt (mm ² /s)
Fluid temperature	-10°C to +180°C
Ambient temperature	-10°C to +80°C
Control Type	Normally closed, (on request Normally open, Double acting)



OVERALL DIMENSION

CODE	Actuator	ND mm	Pilot Pressure bar	Max Pressure bar	Q mm	C mm	R mm	K mm	Threaded connection				
									G	T mm	A mm	L mm	SW mm
PE140CGW10/V	40	ND10	4	0 - 13	1/8"	50.5	27	112	3/8"	12	124	68	27
PE150CGW10/V	50		4.5	0 - 14	1/8"	60	33	125			135		
PE140DGW15/V	40	ND15	4	0 - 13	1/8"	50.5	27	112	1/2"	12	124	68	27
PE150DGW15/V	50		4.5	0 - 14	1/8"	60	33	125			135		
PE150EGW20/V	50	ND20	4.5	0 - 14	1/8"	60	33	132	3/4"	16	140	75	32
PE150FGW25/V	50	ND25	4.5	0 - 8	1/8"	60	33	136	1"	17	150	90	40
PE163FGW25/V	63		5	0 - 13	1/8"	75	41	162			172		
PE190FGW25/V	90		3.5	0 - 14	1/8"	106	55	223			235		
PE163GGW32/V	63	ND32	5	0 - 6	1/8"	75	41	174	1 1/4"	21	190	116	50
PE190GGW32/V	90		6	0 - 16	1/8"	106	55	223			235		
PE163HGW40/V	63	ND40	5	0 - 5	1/8"	75	41	175	1 1/2"	21	190	116	56
PE190HGW40/V	90		6	0 - 16	1/8"	106	55	223			235		
PE163IGW50/V	63	ND50	5	0 - 3	1/8"	75	41	183	2"	22	205	138	69
PE190IGW50/V	90		6	0 - 10	1/8"	106	55	232			250		
PE190MGW65/V	90	ND65	6	0 - 6	1/8"	106	55	265	2 1/2"	26	285	178	85
PE1125MGW65/V	125AL		5.5	0 - 9	1/4"	170	85	315			327		
PE1125RGW80/V	125AL	ND80	5.5	0 - 5	1/4"	170	85	327	3"	27	380	210	100



DESCRIPTION

Single Acting, Normally Closed (NC) - Inlet Under Seat

PRESENTATION

- Welded Socket Valve Acc. to DIN 11850-2
- Optional Socket Valve Acc. to DIN 11850-3
- Water Hammer effect prevention
- Protected visual position indicator
- PTFE sealing pack
- Maintenance free sealing pack
- Double acting version available on request
- Normally open version available on request
- Pilot thread: G1/8" (G1/4" for 125 mm actuators)
- Universal mounting position

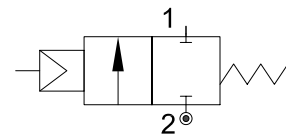


USE: Packaging, Drinks Filling Machinery, Textile printing & Dyeing, Gas industry, Pharmacy & Medical Equipment, Chemical industry, Disinfection, Foaming Equipment, Water/sewage Disposal

CONNECTION: Welded

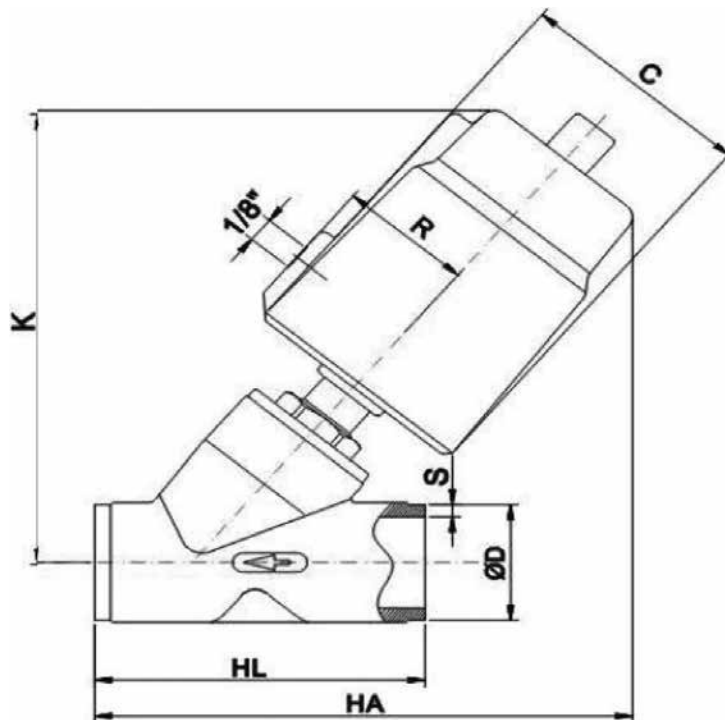
VALVE FEATURES

Fluid Pressure	Up to max 16bar (232psi)
Control Pressure	3.5 - 6bar (see tables)
Control Fluid	Neutral gas, Air
Body material	Stainless steel AISI 316
Sealing	PTFE
Actuator Material	AISI 304 or Aluminium (125 mm)
Actuator Size	40mm, 50mm, 63mm, 90mm, 125mm
Fluids	Water, Alcohol, Oils, Fuels, Steam, Natural gases or Liquids, Organic solvents, Acids and Lyes
Fluid viscosity	Max 600cSt (mm ² /s)
Fluid temperature	-10°C to +180°C
Ambient temperature	-10°C to +80°C
Control Type	Normally closed (on request Normally open, Double acting)



OVERALL DIMENSION

CODE	Actuator	ND mm	Pilot Pressure bar	Max Pressure bar	Q mm	C mm	R mm	K mm	Welded connection			
									HA mm	HL mm	DIN 11850-2	
											D mm	S mm
PS140DGW15/V	40	ND15	4	0 - 13	1/8"	50.5	27	112	118	70	19	1.5
PS150DGW15/V	50		4.5	0 - 14	1/8"	60	33	125	128			
PS150EGW20/V	50	ND20	4.5	0 - 14	1/8"	60	33	132	135	82	23	1.5
PS150FGW25/V	50	ND25	4.5	0 - 8	1/8"	60	33	136	150	100	29	1.5
PS163FGW25/V	63		5	0 - 13	1/8"	75	41	162	175			
PS190FGW25/V	90		3.5	0 - 14	1/8"	106	55	211	218			
PS163GGW32/V	63	ND32	5	0 - 6	1/8"	75	41	174	186	125	35	1.5
PS190GGW32/V	90		6	0 - 16	1/8"	106	55	223	232			
PS163HGW40/V	63	ND40	5	0 - 5	1/8"	75	41	175	190	130	41	1.5
PS190HGW40/V	90		6	0 - 16	1/8"	106	55	223	235			
PS163IGW50/V	63	ND50	5	0 - 3	1/8"	75	41	183	206	155	53	1.5
PS190IGW50/V	90		6	0 - 1	1/8"	106	55	232	250			
PS190MGW65/V	90	ND65	6	0 - 6	1/8"	106	55	265	325	270	70	2
PS1125MGW65/V	125AL		5.5	0 - 9	1/4"	170	85	315	365			
PS1125RGW80/V	125AL	ND80	5.5	0 - 5	1/4"	170	85	327	380	284	85	2



DESCRIPTION

Angle Seat Valve - 2/2 NC - Inlet Under Seat

PRESENTATION

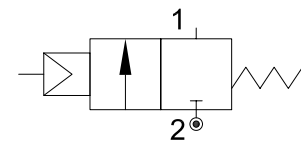
- Compact solution
- Maintenance free sealing pack
- NPT thread on request
- AISI 316 body available on request
- From 3/8" up to 2"
- 3/4" and 1 1/4" version available on request

USE: Food, Packaging, Petrochemical, Metallurgical, Spraying, Vehicles, Printing and Dyeing Machinery equipment

CONNECTION: Threaded (BSP, BSPT,NPT)

VALVE FEATURES

Fluid Pressure	Max 16bar (232psi)
Control Pressure	3 - 8bar (43.5 - 116psi)
Control Fluid	Neutral gases, Air
Body material	AISI 304
Sealing	PTFE
Fluids	Water, Oils, Gases, Pulp and other liquids
Fluid viscosity	Max 600cSt (mm ² /s)
Fluid temperature	-10°C to +120°C
Ambient temperature	-10°C to +80°C
Control Type	Double acting



OVERALL DIMENSION

CODE	Actuator	ND mm	Pilot Pressure bar	Max Pressure bar	G	N mm	K mm	C mm	T mm	A mm	L mm	SW mm
PEE332CGW10/V	32	ND10	3 - 8	16	3/8"	5	99	37	12	112	68	27
PEE332DGW15/V	32	ND15	3 - 8	16	1/2"	5	93	37	15	105	68	27
PEE340FGW25/V	40	ND25	3 - 8	16	1"	5	108	45	17	22	90	40
PEE350HGW40/V	50	ND40	3 - 8	16	1 1/2"	5	154	55	21	68	116	56
PEE363IGW50/V	63	ND50	3 - 8	16	2"	5	154	69	22	78	138	69

