

DESCRIPTION

Solenoid valve 2 way normally open in stainless steel AISI 316 direct acting poppet type

CONSTRUCTION

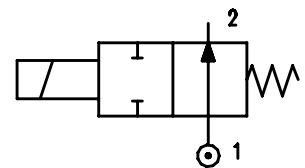
| | |
|------------------|------------------|
| Body | AISI 316 |
| Armature tube | AISI 316 |
| Plunger and core | AISI 430FR |
| Shading ring | Silver |
| Springs | AISI 316 |
| Seal material | NBR - FPM - EPDM |




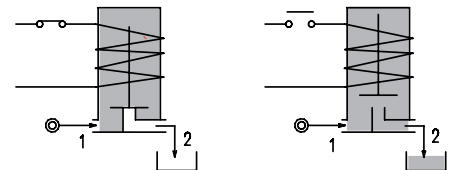
2

FEATURES

Maximum allowable pressure PS 50bar^④
 Maximum fluid viscosity 25cSt (mm²/s)
 Ambient temperature: from -10°C to +80°C according to the coil
 Universal mounting position



OPTIONS: Versions for use with industrial oxygen
 Series 7 explosion proof coil according
 to ATEX - EExmII
 c  US certified coils



ON REQUEST: Versions for use with fluid temperature at -40°C

| CODE ① ② | Connection G ISO 228 | Orifice mm | Kv m ³ /h | Differential pressure bar | | | Nominal power | | | Coil | | Seal ① | Temp. range °C |
|------------------|----------------------------|---------------|-------------------------|------------------------------|-----|-----|---------------|---------------|------------|--------|-------|-----------|----------------------|
| | | | | Min | Max | | AC Inrush | VA Holding | DC Watt | Series | Width | | |
| E271A...12///... | 1/8" | 1.2 | 0.04 | 0 | 19 | 19 | 12 | 8 | 6.5 | 3 | 22 | NBR=B | -10 +90 |
| E271A...15///... | | 1.5 | 0.06 | 0 | 14 | 14 | | | | | | EPDM=E | -10 +140 |
| E271A...20///... | | 2 | 0.09 | 0 | 8 | 8 | | | | | | FPM=V | -10 +140 |
| E271A...25///... | | 2.5 | 0.14 | 0 | 4.5 | 4.5 | | | | | | | |
| E271A...31///... | | 3.1 | 0.19 | 0 | 2.5 | 2.5 | | | | | | | |

① Seal
 ② Coil
 Example: E271AB15///300 NBR seal
 Coil 12V DC

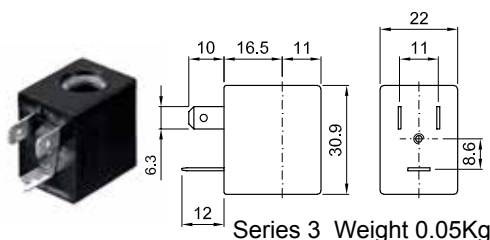
③ REMARK

The maximum allowable pressure PS for steam is 2.5bar (gauge pressure)

| COILS | Alternating Current 50/60Hz (V) | | | | | | | Direct Current (V) | | | Electrical connection | Connectors |
|--------------------------------|---------------------------------|-----|-----|-----|------------|-----|-----|--------------------|-----|-----|-----------------------|-------------------------|
| | 12 | 24 | 48 | 110 | 220 230 | 240 | 380 | 12 | 24 | 48 | | |
| Series 3 Width 22 Code ② | 30A | 30B | 30C | 30D | 30E | 30F | 30G | 300 | 301 | 302 | DIN 46244 | PG9 code 10348000 |

DESCRIPTION
 Class F insulation
 Voltage tolerance
 AC +15% -10%
 DC ± 10%
 Protection class
 IP65 with connector fitted
 IP00 without connector
 Continuous service ED100%

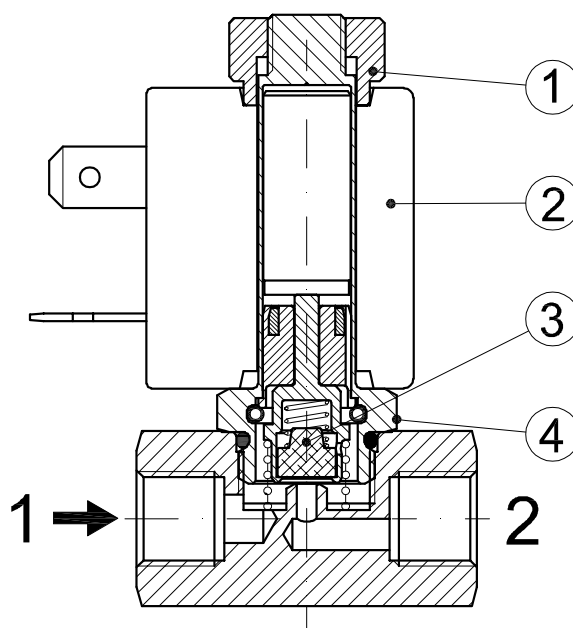
OPTIONS
 Class H insulation
 Cable attached
 Special coil voltage
 Special coil powers
 cULus certified coils



(for more details see section 8)

SPARE PARTS LIST

1. Coil fixing nut
2. Coil
3. Seal assembly
4. Armature tube assembly



OVERALL DIMENSION

