

DESCRIPTION

Solenoid valve 2 way normally closed in stainless steel AISI 316 direct acting poppet type.

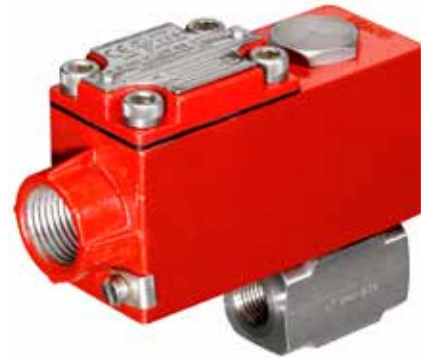
With explosion proof coil certified for hazardous area:

ATEX II 2GDEx d IIC T6 o T5 o T4 Gb

Ex tb IIIC T80°C o T95°C o T130°C Db IP66

Tamb -40°C ÷ +35°C(T6) o +50°C(T5) o +60°C(T4)

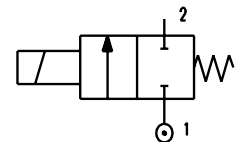
(other certifications e.g.EAC, INMETRO, CCOE etc. on request)



2

VALVE CONSTRUCTION

Body	AISI 316
Armature tube	AISI 316
Plunger and core	AISI 430FR
Shading ring	Silver
Springs	AISI 316
Seal	FPM

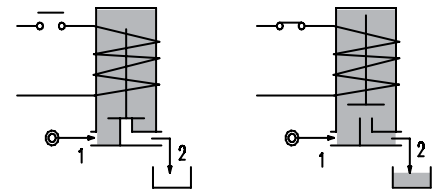


EXPLOSION PROOF COIL CONSTRUCTION

Housing	Red colour alloy (painted with epoxy powder)
Electrical connection	1/2" NPT (M20x1 on request)

FEATURES

- Maximum allowable pressure PS 80bar
- Maximum fluid viscosity 25cSt (mm²/s)
- Ambient temperature: -40°C ÷ +35°C(T6), +50°C(T5), +60°C(T4)
- Mounting position with vertical coil above



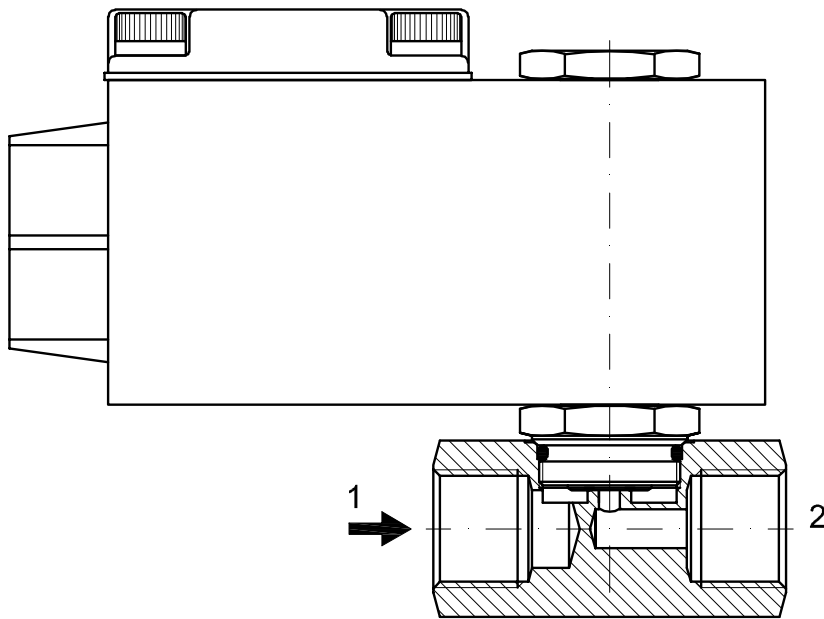
NOTE: The solenoid valve is suitable only with media that are **NOT** potentially explosive

CODE ① ②	Connection G ISO 228	Orifice mm	Kv m ³ /h	Differential pressure bar			Nominal power		Coil series	Seal	Temp. range °C
				Min	Max		AC	DC			
					AC	DC	Holding				
A170... V10///...	1/4" 3/8" 1/2"	1	0.04	0	80	80	12 VA	8W	A6	FPM=V	-10 +80
A170... V12///...		1.2	0.05	0	60	60					
A170... V15///...		1.5	0.07	0	30	26					
A170... V20///...		2	0.1	0	22	20					
A170... V25///...		2.5	0.15	0	16	14					
A170... V30///...		3	0.25	0	15	10					
A170... V35///...		3.5	0.32	0	10	8					
A170... V40///...		4	0.36	0	8	5					
A170... V45///...		4.5	0.41	0	6.5	3.5					

① Connection: B=1/4", C=3/8", D=1/2"
 ② Coil

COILS	Alternating Current 50/60Hz (V)				Direct Current (V)			Electrical connection
	24	48	110	220 230	12	24	48	
Series A6 Code ②	A6B	A6C	A6D	A6E	A60	A61	A62	1/2" NPT

DESCRIPTION
 Voltage tolerance
 AC +15% -10%
 DC ± 10%
 Protection class IP66
 Continuous service ED100%



OVERALL DIMENSION

